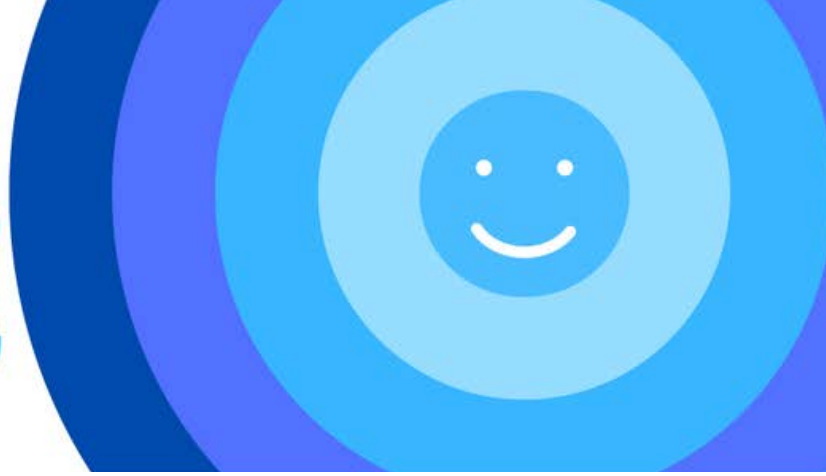


# PROSPERO TEACHING

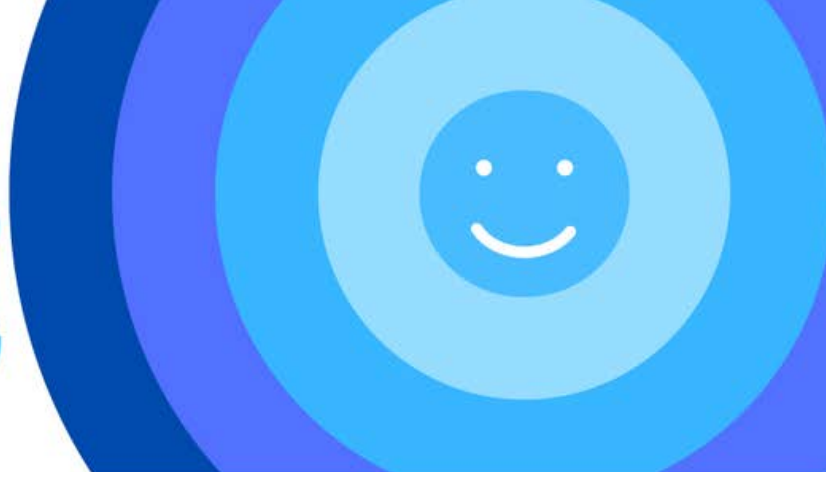
## Teaching in: UK Guide





## TABLE OF CONTENTS

<b>Welcome to the UK!</b>	3
<b>Living and working in the UK</b>	3
Regions of the UK	5
Our UK Office Locations	6
(1.3) Sponsored Visa	6
(1.4) Student Visa	7
<b>Before you get a job</b>	11
VISA requirements & right to work	11
Ancestry VISA	12
Spousal VISA	13
QTS (Qualified Teacher Status)	15
Options for Work	16
English Curriculum	17
<b>After you have secured a role</b>	18
Healthcare in the UK	18
Registering with a Dentist	19
Useful Resources	20



## Welcome to the UK!

Welcome to Prospero Teaching's Guide for relocating as a Teacher to the UK.

We would like to extend a warm welcome to all teachers who are considering working in the UK. The UK has a rich history and culture, with diverse communities, stunning landscapes, and vibrant cities.

We hope that you will enjoy your time here and make the most of the opportunities available.

This guide has been made to inform you of what you need to know before securing a role, and to help you settle into life in the UK.

You will also find helpful tips and information that will assist you with the relocation process.

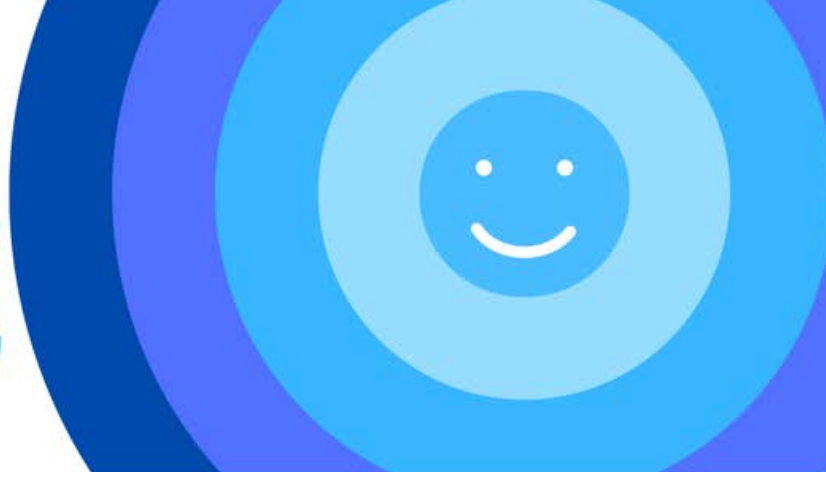
Please feel free to direct any questions or queries to:

[TeachUK@prosperogrp.com](mailto:TeachUK@prosperogrp.com)

**Best wishes from the Prospero Teaching International Team.**







## Who are we?

Prospero Teaching has been successfully placing teaching and support staff for over 20 years. Our network of schools, academies, and nurseries spans the UK and international markets. Our educational services are available in a wide range of educational settings; EYFS, Primary, Secondary, Further Education, SEN, and PRUs.



### We Listen



### We Match



### We Support

We listen, we match, we consolidate and we streamline the recruitment process, and our service is FREE to you as the candidate.

We'll support you every step of the way:

- Professional & personal guidance
- CV writing support
- Interview tips and preparation
- Post placement support

Looking for more information? Check out the guides on our site

| [Teaching Careers Guide](#) | [Supply Teaching Guide](#) | [Teaching Assistant Guide](#) |

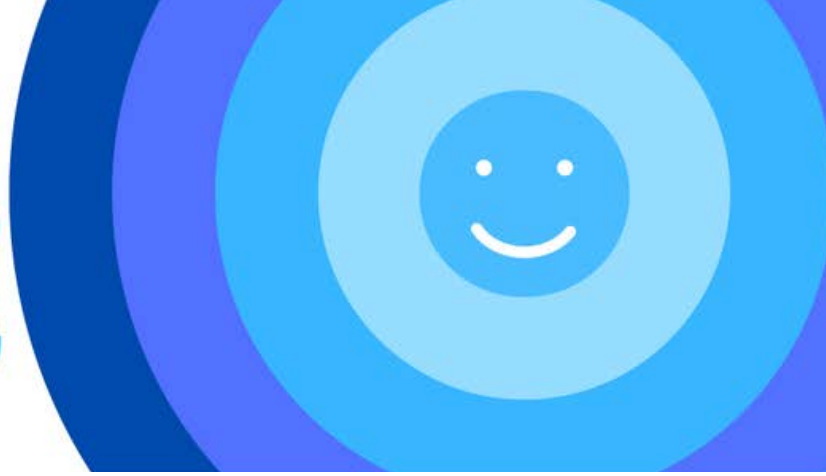
### Training and development opportunities with Prospero Learning

As a teacher in the UK, you will have access to a range of our training and development opportunities through Prospero Learning. These include free face to face and online courses and workshops on topics such as classroom management, assessment, and teaching pedagogy.

In addition, you will have the opportunity to work with experienced teachers in your schools, who can provide guidance and support as you develop your skills.

Find out more [here](#).

Our experienced regional team managers for Secondary and Primary schools, who have excellent relationships with their schools, may also provide additional guidance and support on teaching strategies and techniques.



## Regions of the UK!

The UK is divided into several regions, each with its own unique characteristics and opportunities. These regions include:



**NEWCASTLE**



**LONDON**



**BRISTOL**



**MANCHESTER**



**SOUTHAMPTON**



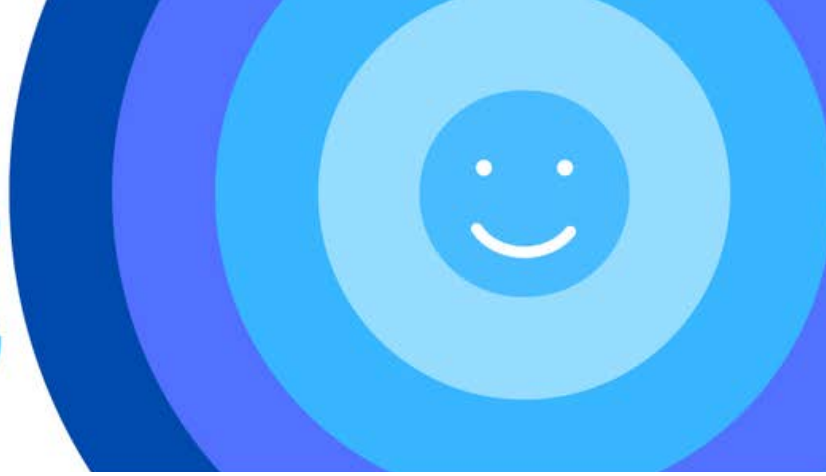
**LIVERPOOL**



**LEEDS**

We have 13 offices throughout England and Wales. Each region has its own regional offices and areas, which are responsible for the management and administration of schools and education services in the area.

# PROSPERO TEACHING



## Our UK Office Locations



LONDON

**15 Worship Street, London EC2A 2DT**

London is an iconic capital with a vibrant cultural scene, world-renowned landmarks, and a diverse population. Beyond the hustle and bustle of central zone 1, London has a quieter side, with beautiful parks and green spaces to explore. It's a fantastic place to live and work, with a thriving education sector and endless opportunities for personal and professional development.

At Prospero Teaching, we believe that London is the perfect place for teachers who want to make a real difference in the lives of their students. Come join us in London and experience all that this incredible city has to offer!

Birmingham is a city on the rise, with a dynamic economy and a growing reputation as a cultural hub.

With a bustling city centre and excellent green spaces, Birmingham is the perfect place for teachers who want to live and work in a vibrant, exciting environment.

**The Colmore Building, Queensway, Birmingham  
B4 6AT, UK**



BIRMINGHAM



# PROSPERO TEACHING



**BRISTOL**

Bristol is a city that has it all – beautiful parks, historic landmarks, and a thriving artistic scene. It's the most populous city in South-West England and sits upon the River Avon.

Bristol is the perfect place for teachers who want to live and work in an environment that's both stimulating and inspiring.

**Office 1.10 Paintworks, Bath Road,  
Arnos Vale, Bristol, BS4 3EH**

Cardiff is a city with a rich history, beautiful parks, and a dynamic cultural scene.

As the capital of Wales, it's also an important centre for education and research, with a growing reputation as a hub for innovation and creativity.

**1 Capital Quarter, Tyndall Street, Cardiff, CF10 4BZ**



**CARDIFF**

Chelmsford is a very liveable city with lots of history that is becoming an increasingly popular place to settle in.

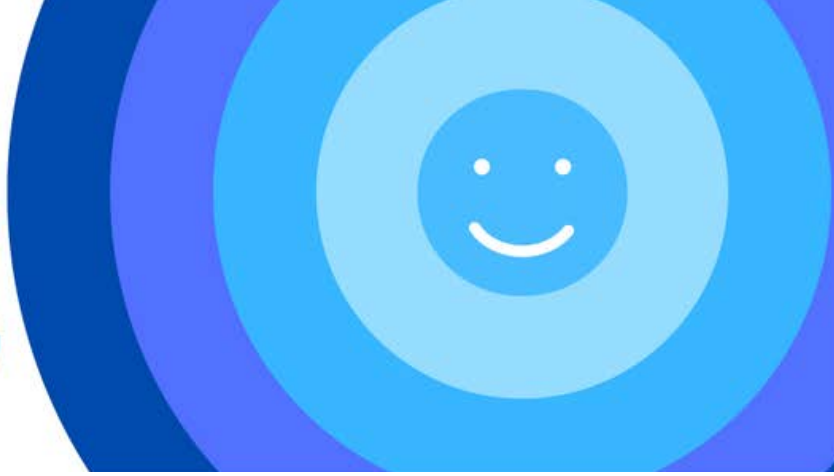
Located quite close to London, in the county town of Essex, Chelmsford is the ideal destination for teachers who are passionate about education and committed to their students' success.

**65A Duke Street, Chelmsford, UK**



**CHELMSFORD**

# PROSPERO TEACHING



Dorset is a beautiful county with stunning beaches, picturesque villages, and a rich cultural heritage.

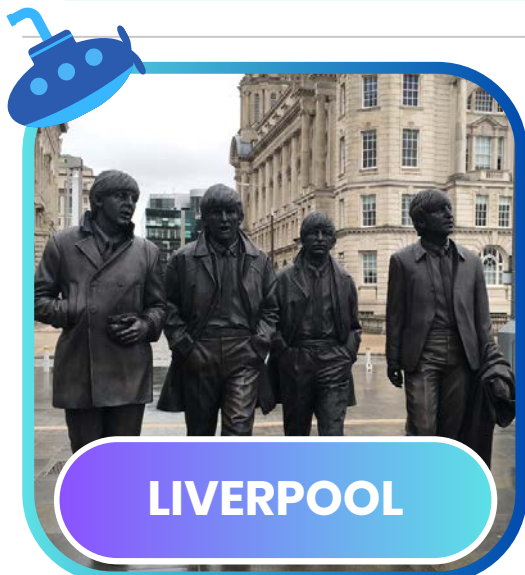
As one of the most beautiful parts of the UK, it's also a fantastic place to live and work as a teacher.

**Suite 44, OVIC, 4 Ocean Way, Ocean Village, SO14 3JZ**

Leeds is a dynamic and exciting city with a rich cultural scene, beautiful parks, and a thriving economy.

This fast-growing city is located in the heart of West Yorkshire, with easy access to the stunning countryside of the Yorkshire Dales and the Peak District.

**Sterling House, The Bourse,  
Boar Lane, Leeds, LS1 5EQ**



Liverpool is a city with a thriving arts scene and an unbeatable location on the banks of the River Mersey.

This friendly and welcoming city is home to some of the best schools in the UK, with a strong tradition of educational excellence and innovation.

**Horton House, Exchange Flags, Liverpool L2 3PF, UK**



# PROSPERO TEACHING



**MANCHESTER**

Manchester is a city that needs no introduction. Known for its legendary music scene, thriving arts and culture, and world-class sporting events, this city is a hub of creativity and innovation. But it's not just the nightlife that makes Manchester a great place to live and work - it's also home to some of the UK's best schools.

**Boulton House, 17 Chorlton St, Manchester, M1 3HY**  
**Bold Bauhaus, 27 Quay St, Manchester, M3 3GY**

Nestled on the stunning coastline of Devon, Plymouth is a city that offers the perfect balance of coastal living and urban convenience.

As a teacher in Plymouth, you'll benefit from access to some of the UK's most beautiful beaches, historic landmarks, and cultural attractions.

**Suite 44, OVIC, 4 Ocean Way, Ocean Village, SO14 3JZ**

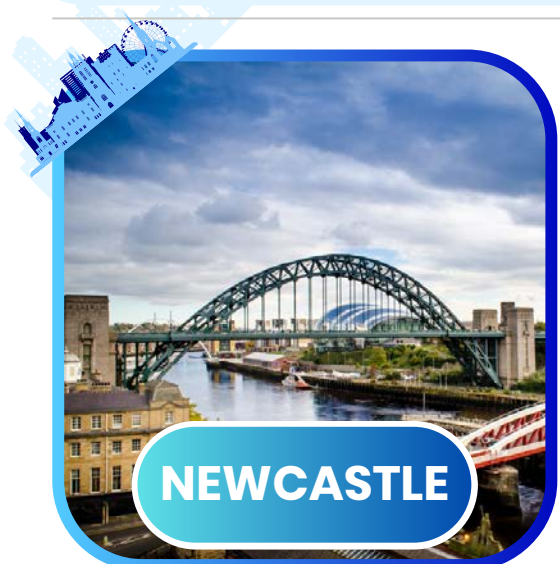


**PLYMOUTH**

Looking for a city that offers the perfect blend of lively culture and stunning natural scenery? Look no further than Newcastle! Why aye, man!

This dynamic and continually expanding city is situated in the center of the North East, offering convenient access to the stunning landscapes of Northumberland and its beautiful coastlines.

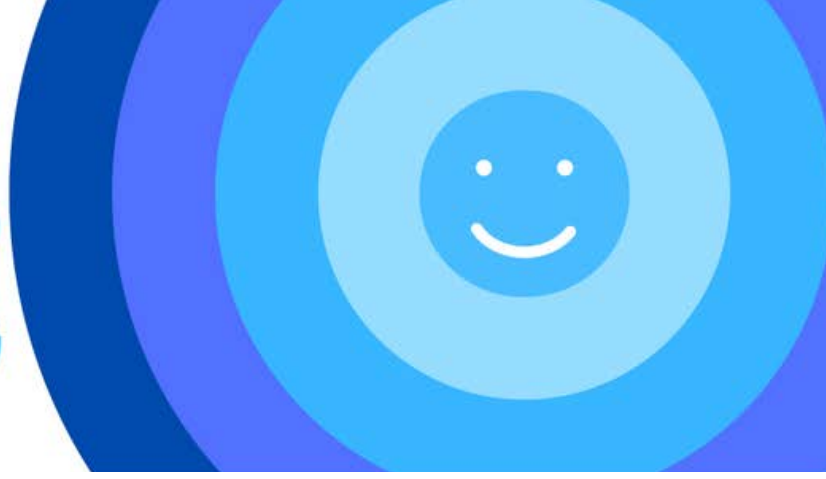
**Rotterdam House, 116 Quayside, Newcastle Upon Tyne**



**NEWCASTLE**

TEACHING IN THE UK

# PROSPERO TEACHING



Situated on the beautiful south coast of England, Southampton is a city that offers the perfect blend of coastal living and city access.

As a teacher in Southampton, you'll benefit from a high quality of life, with a short journey to some of the UK's most stunning beaches, countryside, and cultural attractions.

**Suite 44, OVIC, 4 Ocean Way, Ocean Village, SO14 3JZ**

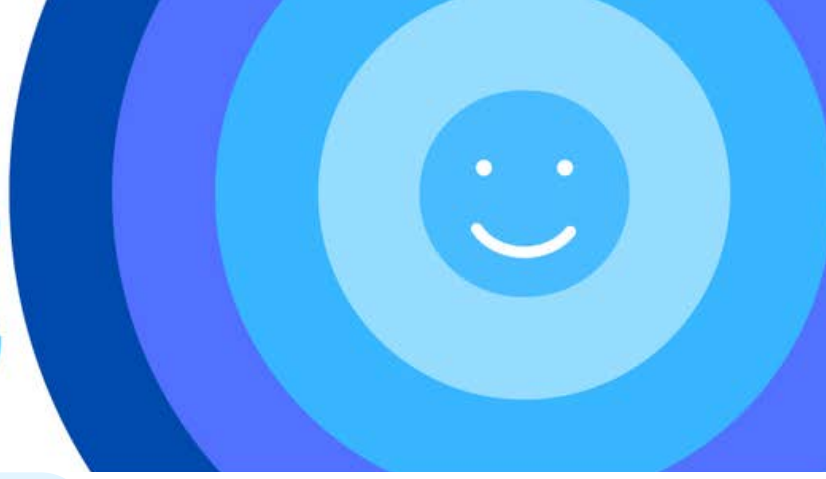
Down on the beautiful coastline of South Wales. From the quaint fishing village of Mumbles to the stunning Gower Peninsula, there is no shortage of natural beauty to explore in this wonderful city.

Choosing to teach in Swansea allows educators to combine their passion for teaching with the wonders of nature, creating an exceptional educational experience for both themselves and their students.

**Ethos, Kings Road Swansea Docks, SA1 8AS**



# PROSPERO TEACHING



## Before you get a job

### VISA requirements & right to work:

If you are not a UK citizen, you will need to have the right to work in the UK before you can take up a teaching job. This may require you to obtain a visa, which can be obtained through the UK Visa and Immigration department.

In order to work in the UK you must have the Right to Work. This means either a British or Irish passport, or eligibility for a Youth Mobility Visa, Ancestry Visa, Sponsorship Visa or Spousal Visa.



## Youth Mobility Visa

### Eligibility

- Have at least £2,530 in savings
- Hold a current passport
- Must be aged 18 to 35 from:
  - Australia
  - Canada
  - New Zealand
  - OR aged between 18 – 30 from
    - Andorra
    - Iceland
    - Japan
    - Monaco
    - San Marino
    - Uruguay

The earliest you may apply for a Youth Mobility Visa is six months before you travel. Once you've applied online, proven your identity and provided your documents, you'll usually get a decision on your visa within three weeks.

You'll be given a visa to live and work in the UK for up to two years. You can apply for a 3rd year of the visa at the end of your 2nd year,

### Total Visa Cost £1,850

The application fee is £298.

There is also the added cost of the healthcare surcharge, which is usually £776 per year (2 years). This ensures you are covered under the National Health Service (NHS), in case you are injured or need a GP appointment. (You will not be charged).





## Ancestry VISA

- You must be aged 17 or over
- Have enough money without help from public funds to support and house yourself and any dependants
- Can and plan to work in the UK

Are from the following countries or territories:

- Commonwealth citizen
- British overseas citizen
- British overseas territories citizen
- British national (overseas)
- Citizen of Zimbabwe

### Your ancestry

You must show that you have a grandparent born in one of the following circumstances:

- Born in the UK, the Channel Islands or the Isle of Man.
- Born before 31 March 1922 in what is now Ireland.
- Born on a ship or aircraft that was either registered in the UK or belonged to the UK government

### You can still claim ancestry if:

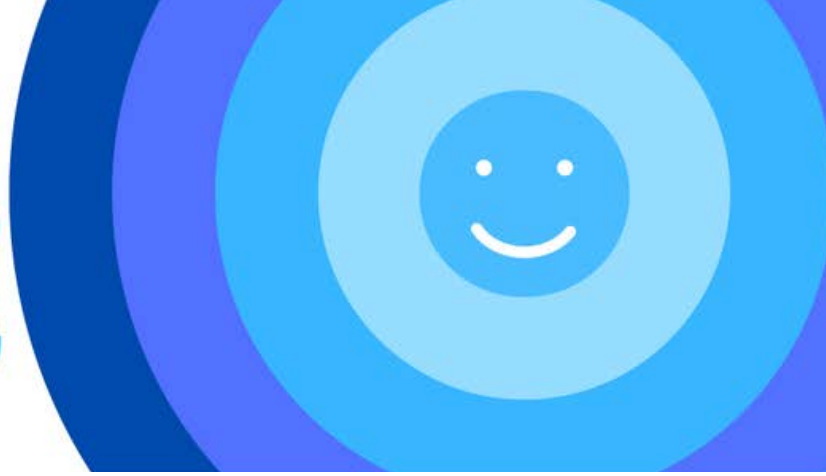
- You or your parent were adopted
  - Your parents or grandparents were not married
- \*You cannot claim UK ancestry through step-parents.*

The earliest you may apply for the ancestry visa is three months before you travel. Once you've applied online, proven your identity and provided your documents, you'll usually get a decision on your visa within three weeks.

You'll be given a visa to live and work in the UK for up to five years.

### Total Visa cost £5,812

A UK Ancestry Visa application fee costs £637. There is also the added cost of the healthcare surcharge, which is usually £1,035 per year (5 years). This ensures you are covered under the National Health Service (NHS), in case you are injured or need a GP appointment. (You will not be charged).



## Spousal VISA

### Eligibility:

To apply as a partner, you and your partner both need to be 18 or over.  
Your partner must also either:

- Be a British or Irish citizen
- Have settled in the UK - for example, they have indefinite leave to remain, settled status or proof of permanent residence
- Be from the EU, Switzerland, Norway, Iceland or Liechtenstein and have pre-settled status - they must have started living in the UK before 1 January 2021
- Have a Turkish Businessperson visa or Turkish Worker visa
- have protection status (leave to remain as a refugee, permission to stay as a refugee or a person with humanitarian protection)

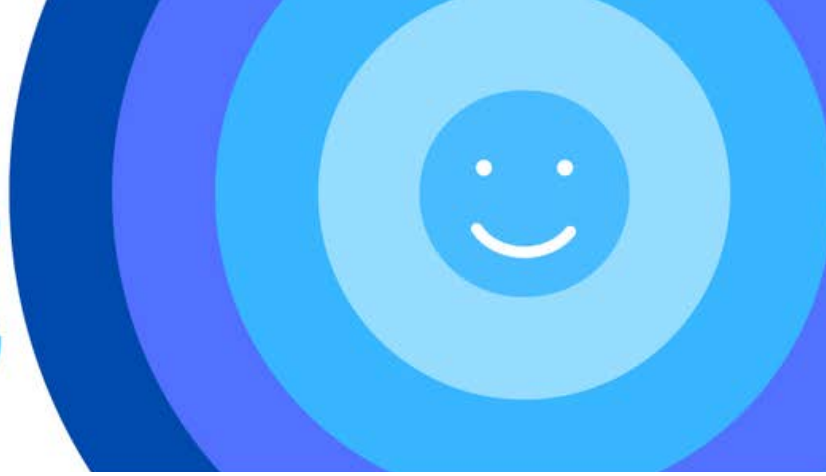
You and your partner must intend to live together permanently in the UK after you apply.

### What you'll need to prove:

You must be able to prove one of the following:

- You're in a civil partnership or marriage that's recognised in the UK
- You've been living together in a relationship for at least 2 years when you apply
- You are a fiancé, fiancée or proposed civil partner and will marry or enter into a civil partnership in the UK within 6 months of arriving





## Spousal VISA

If you do not meet these requirements you may still be able to apply for a visa or extend your permission to stay if:

- You have a child in the UK who is a British or Irish citizen or has lived in the UK for 7 years and it would be unreasonable for them to leave the UK.
- There would be very significant difficulties for you and your partner that could not be overcome if you lived together as a couple outside the UK.
- It would breach your human rights to stop you from coming to the UK or make you leave.

If you're applying as a fiancé, fiancée or proposed civil partner you must prove:

- Any previous marriages or civil partnerships have ended
- You plan to marry or become civil partners within 6 months of arriving in the UK

You will not be able to work during your engagement.

### How long can I stay?

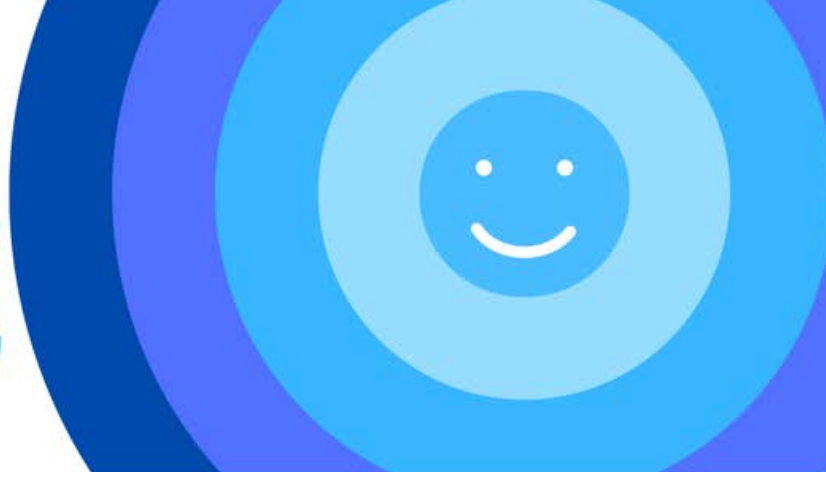
You can stay in the UK for 2 years and 9 months on this visa. If you're applying as a fiancé, fiancée or proposed civil partner, you can stay for 6 months.

After this you'll need to apply to extend your stay.

### Total Visa cost £2,573

The current cost of the spousal visa is £1,538. There is also the added cost of the healthcare surcharge, which is usually £1035 per year. This ensures you are covered under the National Health Service (NHS), in case you are injured or need a GP appointment. (You will not be charged).





## Sponsorship/Skilled Worker VISA

To qualify for a Sponsorship/Skilled Worker visa, you must:

- work for a UK employer that's been approved by the Home Office
- have a 'certificate of sponsorship' from your employer with information about the role you've been offered in the UK
- do a job that's on the list of eligible occupations
- be paid a minimum salary - how much depends on the type of work you

**Find out more here: [www.gov.uk/skilled-worker-visa](https://www.gov.uk/skilled-worker-visa)**

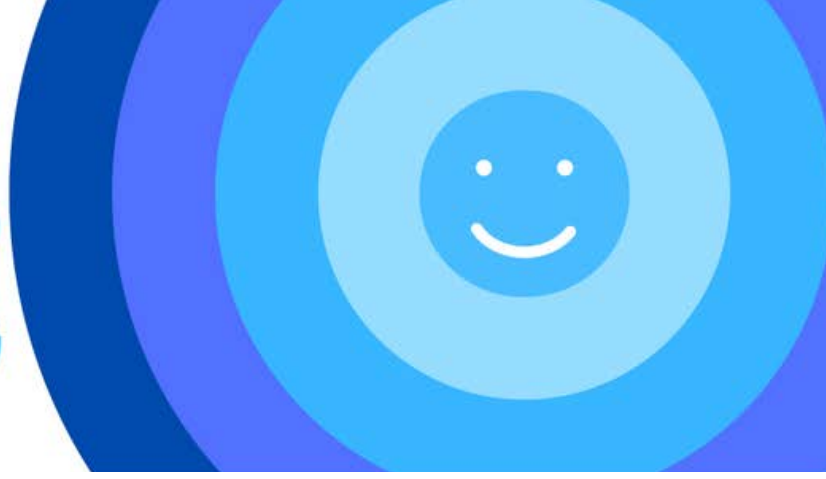
### How long can I stay?

Your visa can last for up to 5 years before you need to extend it. You'll need to apply to extend or update your visa when it expires or if you change jobs or employer.

### Visa cost

The current cost of application fee for sponsorship visa is Application fee (up to 3 years) £719 per person

- Pay the healthcare surcharge - £1,035 per year (3 years)
  - **Total Visa cost with 1 year of health surcharge = £1,754**
  - Please note you will have to pay for the health surcharge for the following years should you decide to continue staying in the UK
- You'll need to prove you have £1,270 available to support yourself in the UK



## ✓ QTS (Qualified Teacher Status)

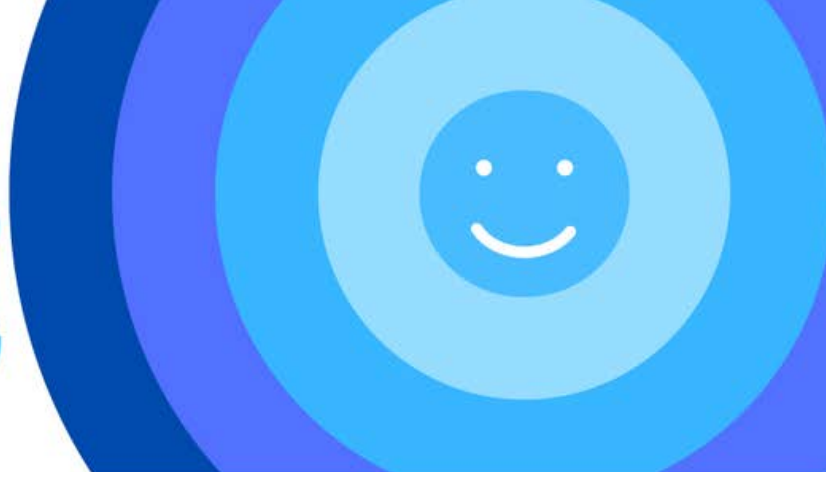
If you hold an overseas teaching qualification, you may still be eligible to teach in the UK. However, you will need to have your qualifications assessed to determine if they meet the UK's Qualified Teacher Status (QTS) standards. The QTS process is managed by the Department for Education, and you can find more information on the [QTS website](#).

You can teach with your overseas qualifications for up to four years, after which you will need to obtain QTS.

### **DBS Check**

Before starting work in a UK school, you will need to obtain overseas police clearance and a Disclosure and Barring Service (DBS) check. This is to ensure that you are eligible to work with children in the UK.





## Options for Work

There are several work options available for teachers in the UK. These include:

- **Guaranteed Pay (GP)**

Full-time or part-time roles in a primary or secondary school.

- **Supply Teaching**

Short-term roles covering teacher absences.

- **Long-term Roles**

Temporary roles covering a teacher's absence for an extended period.

- **Permanent**

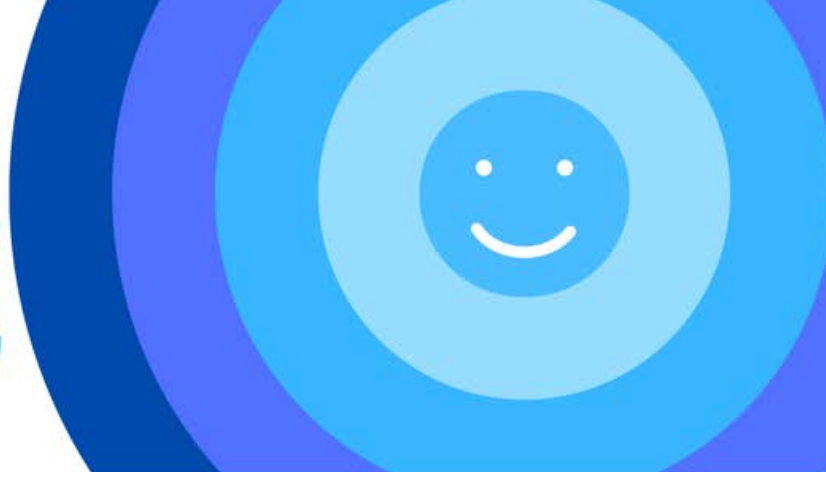
Full-time or part-time roles in a primary or secondary school.

- **Teaching Assistant Work**

Supporting teachers in a variety of roles in the classroom.







## English Curriculum

The English curriculum is divided into several key stages, starting with the Early Years Foundation Stage for children aged 3–5, followed by Key Stage 1 (ages 5–7), Key Stage 2 (ages 7–11), Key Stage 3 (ages 11–14), Key Stage 4 (ages 14–16), and post-16 education.

The curriculum covers a range of subjects, including English, mathematics, science, history, geography, modern foreign languages, design and technology, art and design, music, physical education, and computing.

Take a look at the UK curriculum [here](#).





## Healthcare in the UK

### **Emergencies:**

The emergency number in the UK is 999. Call this number for any life-threatening emergency. For medical advice on any issue that is not life-threatening, call 111.

The National Health Service offers free access to doctors, dentists and hospitals in the UK.

### **Registering with a General Practitioner (GP)**

[Go to this website](#) and type in your postcode. You'll then be given a list of your nearby medical centres in your area you can register with. When you get some spare time, head down to your chosen medical centre and ask to register.

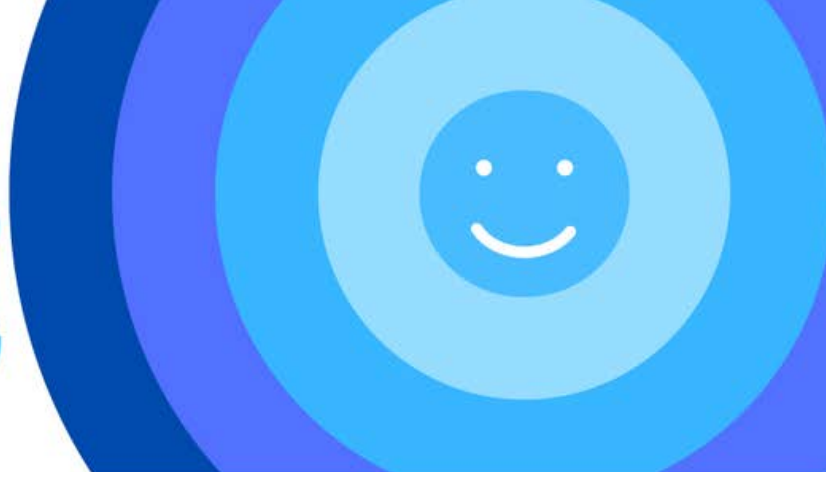
You'll be asked to complete some forms and to show photo ID and a proof of address (e.g. bank statement, utility bill). Once you have completed registration, you can then book appointments at this medical centre.

### **Unregistered or unable to get an appointment**

You can also go along to an NHS Walk-In Centre at any time without making an appointment. However, in most cases you will need to wait for at least 2 hours before being able to see a nurse. Alternatively, call 111 if you are very unwell and they can source you a GP appointment within your area, including out of hours appointments.

### **Pharmacies**

There are pharmacies all over the country, including small locally-run pharmacies and large chain pharmacies such as Boots. They usually sell a wide-range of items and are a good place to visit if you have a mild cold or need advice from a pharmacist. Prescriptions for some medicines are free, however some will incur a dispensing charge of about £9. For more information on prescription costs visit [this website](#).



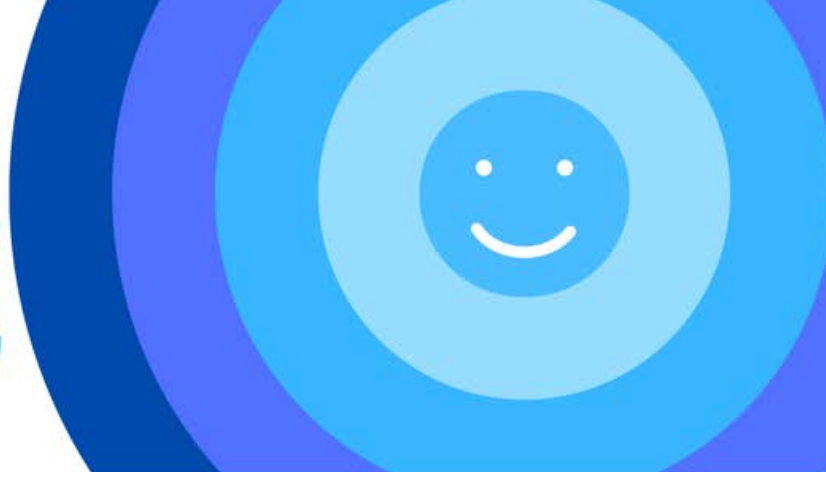
## Healthcare in the UK

### **Registering with a dentist**

This requires a very similar process to registering with a doctor (above), although dentists do not operate with catchment areas which means that you can register with whichever dentist is most convenient for you. Go to this website and type in your postcode to find your nearest dentist. Receiving dental work with an NHS dentist will involve costs, although this is less expensive than dental work with a private dentist.







## Useful Resources

There are several resources available to teachers in the UK that you may not be familiar with, including:

- Department for Education – the UK government department responsible for education and children's services.
- National Education Union – a UK trade union for education professionals.
- Education and Training Foundation – a UK government-funded organization that provides training and development for teachers.



TEACHING IN THE UK

PROSPERO  
TEACHING



GOOD LUCK!

The UK teams wish you all  
the best on your  
adventure.



Thank You!